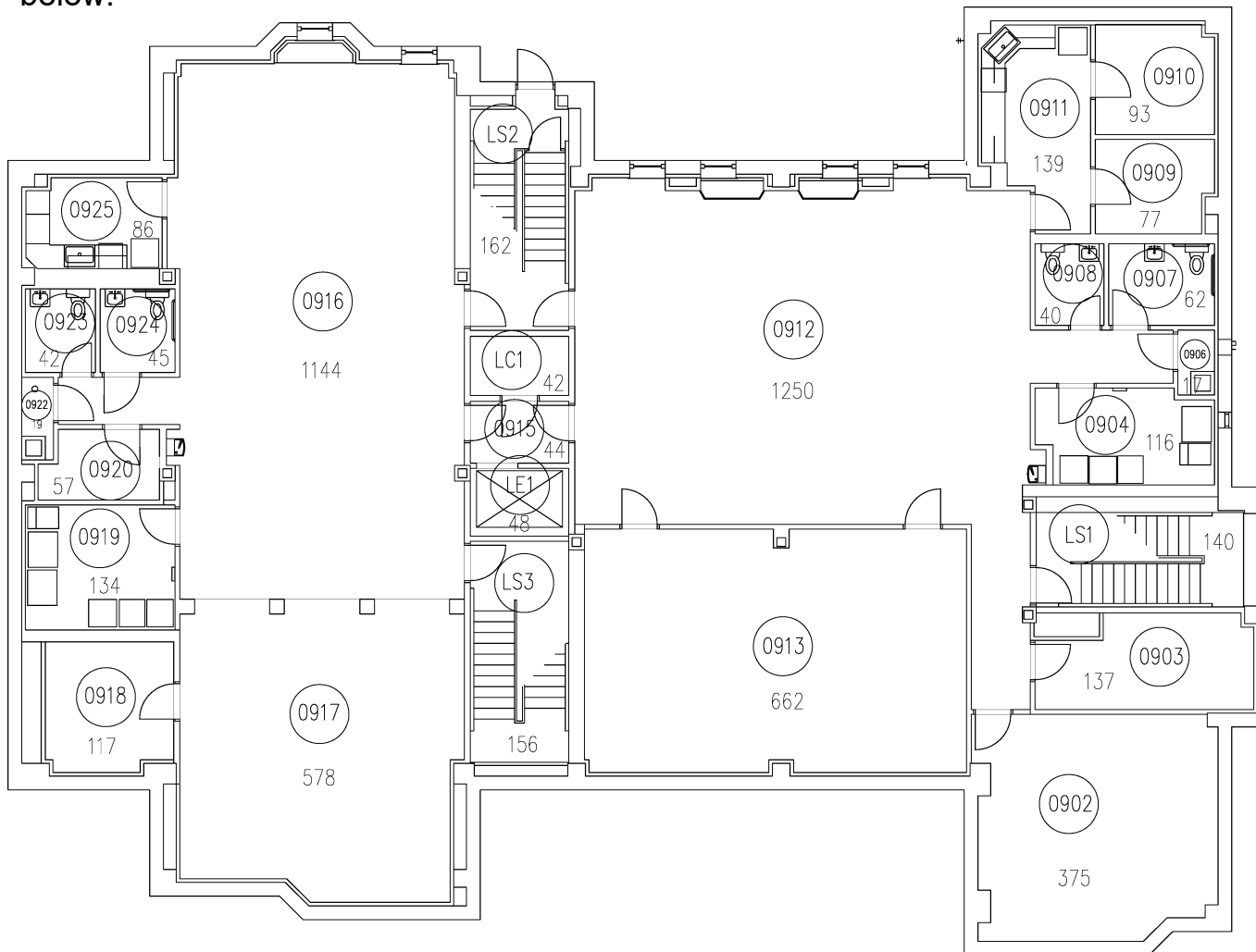


# House 21

House 21 is on the building on the left side of the vertical stairwells in the image below.

# House 22

House 22 is the building on the right side of the vertical stairwells in the image below.



Small Group Housing BLDG #2  
LOWER LEVEL FLOOR PLAN  
GROSS SQUARE FOOTAGE = 6,832

## Lower Level:

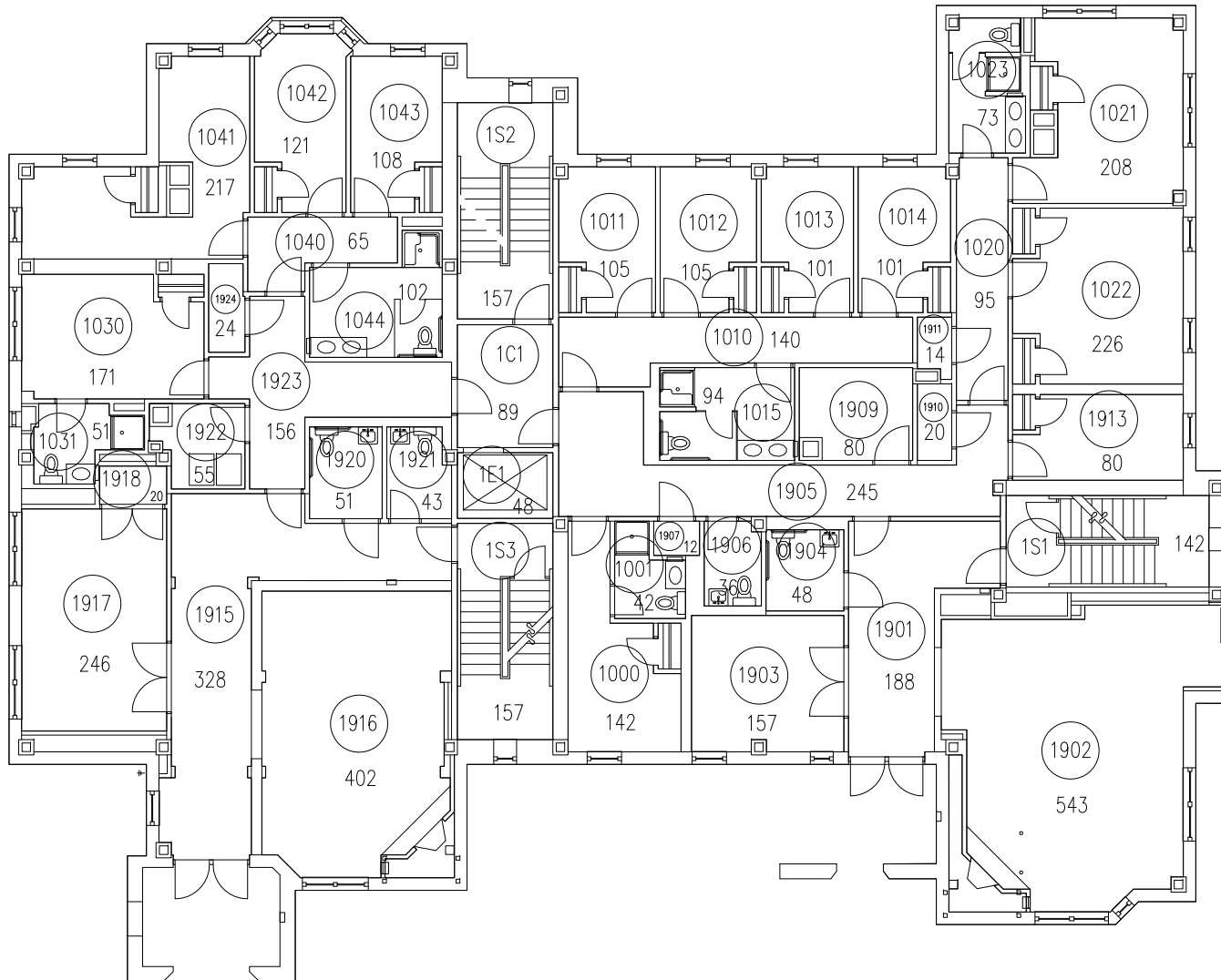
- Kitchen
- Common Area
- **No residential housing on the lower level**
- **Chapter Rooms will be locked down for entry.**

# House 21

House 21 is on the building on the left side of the vertical stairwells in the image below.

# House 22

House 22 is the building on the right side of the vertical stairwells in the image below.



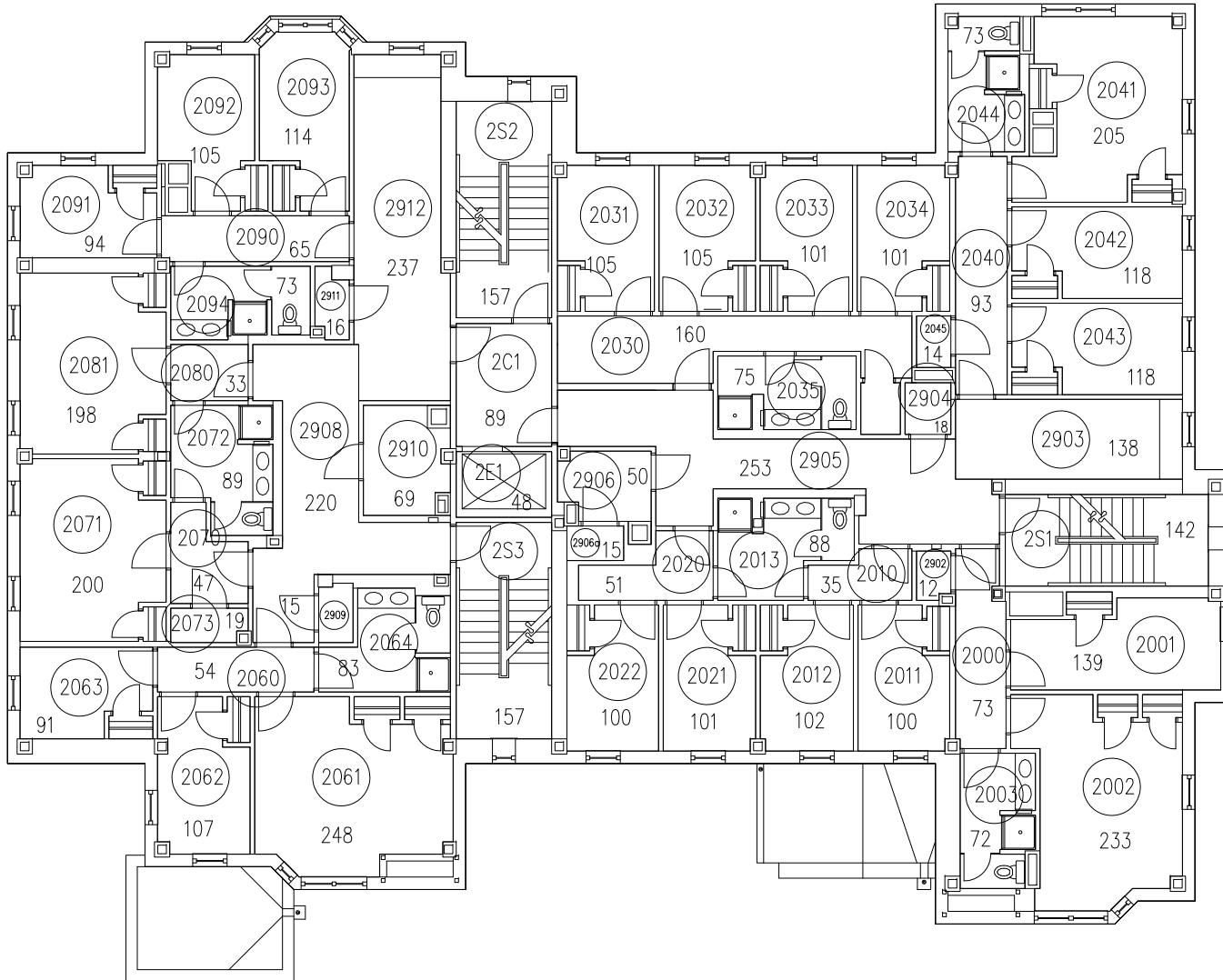
Small Group Housing BLDG #2  
FIRST LEVEL FLOOR PLAN  
GROSS SQUARE FOOTAGE = 6,868

# House 21

House 21 is on the building on the left side of the vertical stairwells in the image below.

# House 22

House 22 is the building on the right side of the vertical stairwells in the image below.



**Second Level:  
Contains bedrooms  
where residents  
will reside.**

Small Group Housing BLDG #2  
SECOND LEVEL FLOOR PLAN  
GROSS SQUARE FOOTAGE = 6,835

