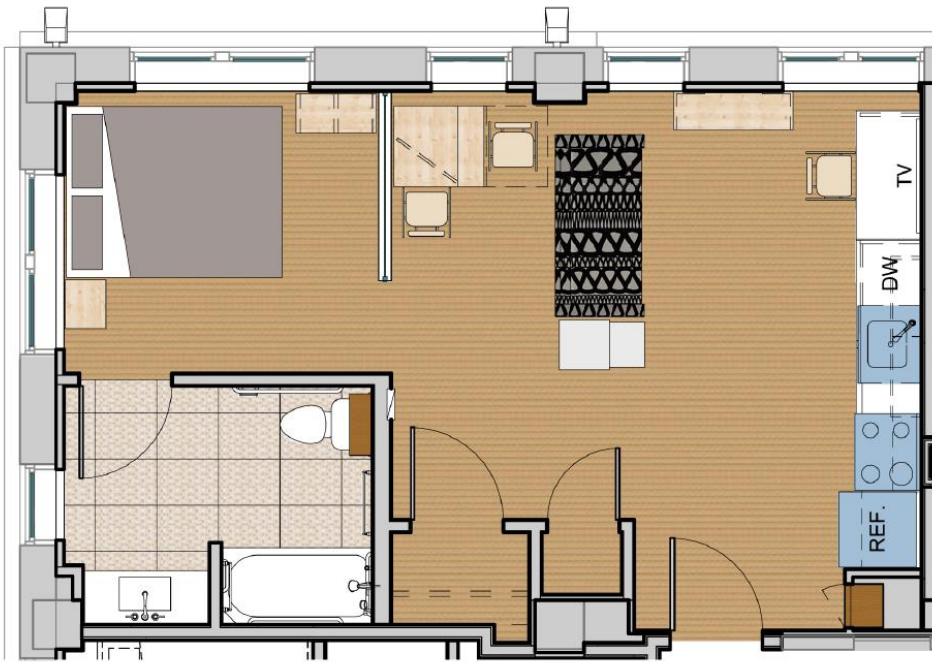




**QUADRANGLE**  
WASHU OFF-CAMPUS LIVING

6188 McPherson Avenue | Apartment 204 | St. Louis, MO 63112

Beds: Studio | Baths: 1  
473 Square Feet



## AMENITIES

- Furnished (details below)
- Updated private kitchen (refrigerator, stove/oven, dishwasher, microwave & sink included)
- All utilities included (water, trash, sewer & electric – building does not have gas)
- Central heat and A/C – controlled by personal thermostat
- Three washers/dryers located on floors 3, 4, & 5 – free to use
- Parking lot across street - included
- Served by Campus2Home Shuttle
- Secure key access to building & apartment
- 24 hour Emergency Maintenance

You'll love it here ↗

## CABLE/INTERNET

- Both are included and provided by Spectrum
- Hardwired internet only included – bring your own router for Wi-Fi access
- Password will be printed on your personal router

## FURNITURE INCLUDED:

- Full Size Bed
- Full Size Mattress
- Desk
- Desk Chair
- Couch
- Lounge Chair
- Ottoman
- TV

700 Rosedale Ave., Campus Box 1016  
St. Louis, MO 63112

P 314.935.9511 E [quadrangle@wustl.edu](mailto:quadrangle@wustl.edu)

[QUADRANGLE.WUSTL.EDU](http://QUADRANGLE.WUSTL.EDU)



# QUADRANGLE

WASHU OFF-CAMPUS LIVING



You'll love it here +