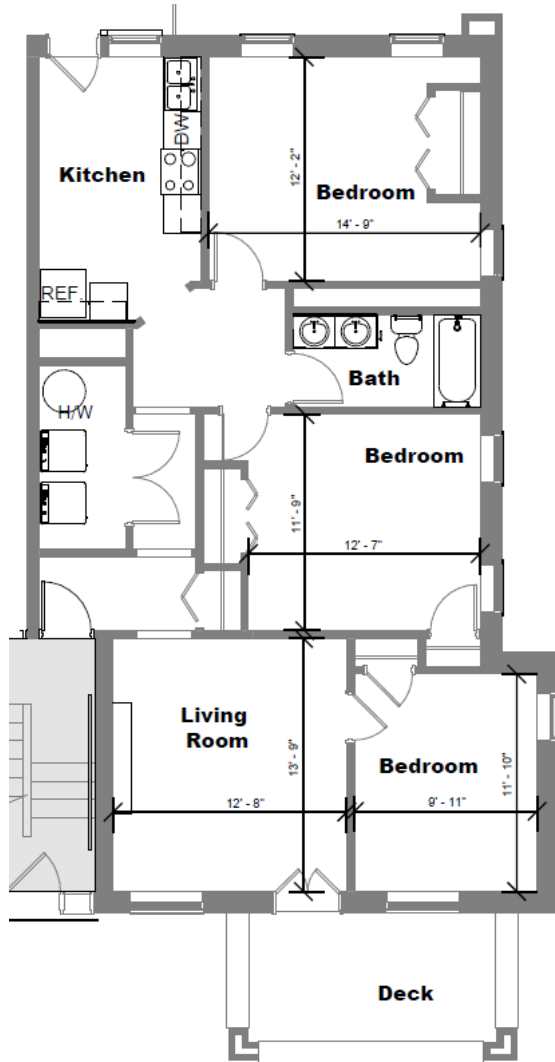


6164 Pershing Avenue | Apartment A | St. Louis, MO 63112

Beds: 3 | Baths: 1

1054 Square Feet



AMENITIES

- Furnished (details below)
- Updated private kitchen (refrigerator, stove/oven, dishwasher, microwave & sink included)
- All utilities included (water, trash, sewer, & electric – no gas in the building)
- Central heat and A/C – controlled by thermostat in apartment
- Washer/Dryer in apartment
- Off street parking behind building – one space per apartment - included
- Served by Campus2Home Shuttle
- Secure key access to building & apartment
- 24 hour Emergency Maintenance

You'll love it here +

CABLE/INTERNET

- Provided by Spectrum
- Rates starting at \$44.99/month for internet & \$44.99/month for cable
- Designated Representative:
 - Dana Carter
 - 314-302-7541
 - dana.carter@charter.com

FURNITURE INCLUDED:

- 3 Twin Size Bed Frames
- 3 Twin Size Mattresses
- 3 Desks
- 3 Desk Chairs
- 3 Dressers
- Dining Table
- 4 Chairs
- Couch
- Lounge Chair
- End Table
- Coffee Table
- Lamp

700 Rosedale Ave., Campus Box 1016
St. Louis, MO 63112

P 314.935.4141 | info@rentparallel.com

RENTPARALLEL.COM

parallel

PROPERTIES

