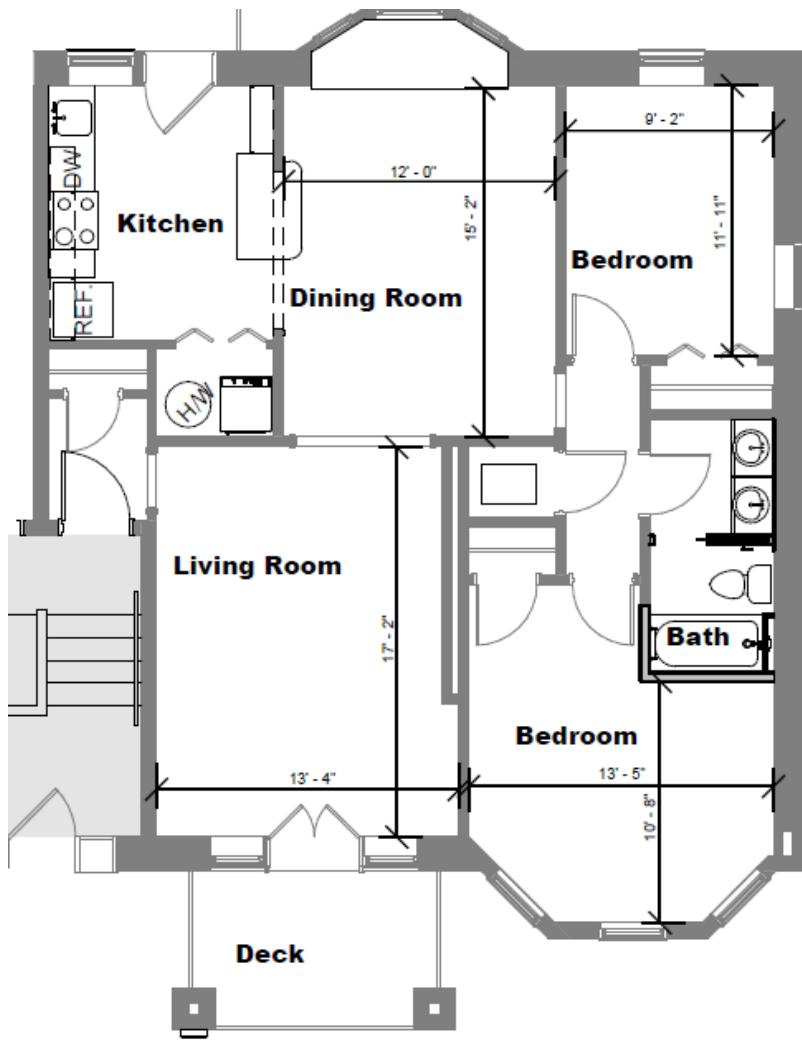


6031 Waterman Boulevard | Apartment E | St. Louis, MO 63112

Beds: 2 | Baths: 1

1032 Square Feet



## AMENITIES

- Furnished (details below)
- Updated private kitchen (refrigerator, stove/oven, dishwasher, microwave & sink included)
- All utilities included (water, trash, sewer, & electric – no gas in the building)
- Central heat and A/C – controlled by thermostat in apartment
- Washer/Dryer in apartment
- Off street parking behind building – one space per apartment - included
- Served by Campus2Home Shuttle
- Secure key access to building & apartment
- 24 hour Emergency Maintenance

You'll love it here +

## CABLE/INTERNET

- Provided by Spectrum
- Rates starting at \$44.99/month for internet & \$44.99/month for cable
- Designated Representative:
  - Dana Carter
  - 314-302-7541
  - [dana.carter@charter.com](mailto:dana.carter@charter.com)

## FURNITURE INCLUDED:

- 2 Twin Size Bed Frames
- 2 Twin Size Mattresses
- 2 Desks
- 2 Desk Chairs
- 2 Dressers
- Dining Table
- 4 Chairs
- Couch
- Lounge Chair
- End Table
- Coffee Table
- Lamp

700 Rosedale Ave., Campus Box 1016  
St. Louis, MO 63112

P 314.935.4141 | [info@rentparallel.com](mailto:info@rentparallel.com)

RENTPARALLEL.COM

# parallel

PROPERTIES

