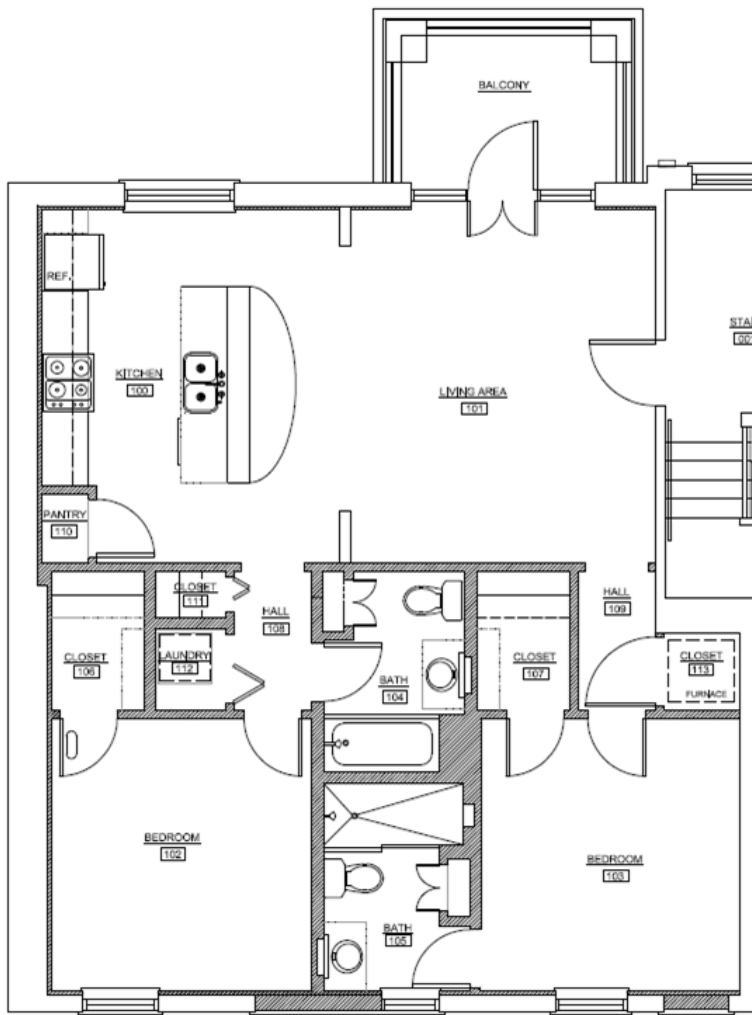




QUADRANGLE
WASHU OFF-CAMPUS LIVING

6010 Pershing Avenue | Apartment 1W | St. Louis, MO 63112

Beds: 2 | Baths: 2
950 Square Feet



AMENITIES

- Furnished (details below)
- Updated private kitchen (refrigerator, stove/oven, dishwasher, microwave & sink included)
- All utilities included (water, trash, sewer & electric – building does not have gas)
- Central heat and A/C – controlled by thermostat in apartment
- Washer/Dryer in apartment
- Off street parking lot behind building – 1 space per apt.
- Served by Campus2Home Shuttle
- Secure key access to building & apartment
- 24 hour Emergency Maintenance

You'll love it here +

CABLE/INTERNET

- Provided by Spectrum
- Rates starting at \$44.99/month for internet & \$44.99/month for cable
- Designated Representative:
 - Dana Carter
 - 314-302-7541
 - dana.carter@charter.com

FURNITURE INCLUDED:

- 2 Twin Size Bed Frames
- 2 Twin Size Mattresses
- 2 Desks
- 2 Desk Chairs
- 2 Dressers
- Barstools
- Couch
- Lounge Chair
- End Table
- Coffee Table
- Lamp

700 Rosedale Ave., Campus Box 1016
St. Louis, MO 63112

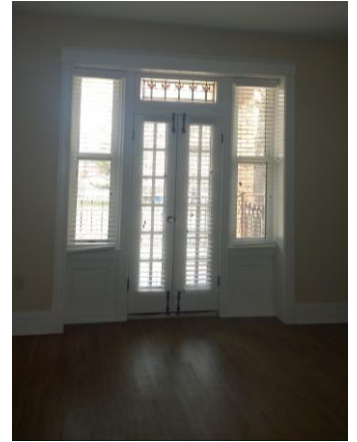
P 314.935.9511 E quadrangle@wustl.edu

QUADRANGLE.WUSTL.EDU



QUADRANGLE

WASHU OFF-CAMPUS LIVING



You'll love it here +